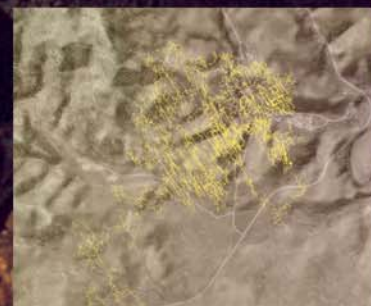
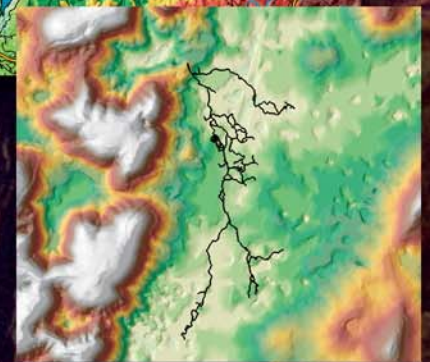


# CAVE AND KARST GIS



**BERNARD W. SZUKALSKI**

*Symposium Organizer*

**LOUISE D. HOSE AND JAMES A. PISAROWICZ**

*Editors*

# CAVE AND KARST GIS

**BERNARD W. SZUKALSKI**

*Symposium Organizer*

**LOUISE D. HOSE AND JAMES A. PISAROWICZ**

*Editors*

Introduction to cave and karst GIS <i>Bernard W. Szukalski</i>	3
Using GIS to manage two large cave systems, Wind and Jewel Caves, South Dakota <i>Rene Ohms and Matthew Reece</i>	4
The use of GIS in the spatial analysis of an archaeological cave site <i>Holley Moyes</i>	9
GIS applied to bioarchaeology: An example from the Río Talgua Caves in northeast Honduras <i>Nicholas Herrmann</i>	17
Remote sensing and GIS-based analysis of cave development in the Suoimuoi Catchment (Son La - NW Vietnam) <i>L.Q. Hung, N.Q. Dinh, O. Batelaan, V. T. Tam, and D. Lagrou</i>	23
Implementation and application of GIS at Timpanogos Cave National Monument, Utah <i>B.E. McNeil, J.D. Jasper, D.A. Luchsinger, and M.V. Rainsmier</i>	34
The application of GIS in support of land acquisition for the protection of sensitive groundwater recharge properties in the Edwards Aquifer of south-central Texas <i>Dan Stone and Geary M. Schindel</i>	38
Revising the karst map of the United States <i>George Veni</i>	45
The development of a karst feature database for southeastern Minnesota <i>Yongli Gao, E. Calvin Alexander, Jr., and Robert G. Tipping</i>	51
Karst GIS advances in Kentucky <i>Lee J. Florea and Randall L. Paylor, Larry Simpson, and Jason Gulley</i>	58
Using geographic information systems to develop a cave potential map for Wind Cave, South Dakota <i>Rodney D. Horrocks and Bernard W. Szukalski</i>	63
Hurricane Crawl Cave: A GIS-based cave management plan analysis and review <i>Joel Despain and Shane Fryer</i>	71
Public datasets integrated with GIS and 3-D visualization help expand subsurface conceptual model <i>Terri L. Phelan</i>	77
An examination of perennial stream drainage patterns within the Mammoth Cave watershed, Kentucky <i>Alan Glennon and Chris Groves</i>	82

---

Cave and Karst GIS Cover: Graphic design by Tammy Johnson and Jim Pisarowicz [photograph by Bernie Szukalski (Whiterocks Cave, Utah), GIS images by Bernie Szukalski and ESRI (the cave pictures - clockwise from top left: Blue Spring Cave, TN, Hidden River Cave, KY, and Wind Cave, SD) the other two are ESRI stock images].

Copyright © 2002 by The National Speleological Society ISBN 1-879961-17-2

Published by the National Speleological Society, 2813 Cave Avenue, Huntsville, Alabama 35810-4431 USA; (256) 852-1300; FAX (256) 851-9241, e-mail: nss@caves.org; World Wide Web: <http://www.caves.org/~nss/>. Printed by American Web, 4040 Dahlia Street, Denver, Colorado 80216 USA.