

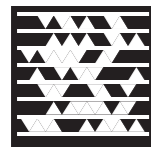
# Journal of Cave and Karst Studies

Volume 78 Number 3 December 2016

<b>Article</b> Influence of Pit Tags on Growth and Survival of Banded Sculpin ( <i>Cottus carolinae</i> ): Implications for Endangered Grotto Sculpin ( <i>Cottus specus</i> ) <i>Jacob Fernholz and Quinton E. Phelps</i>	139
<b>Article</b> Culturable Bacteria Associated with the Caves of Meghalaya in India Contribute to Speleogenesis <i>Subhro Banerjee and SantaRam Joshi</i>	144
<b>Article</b> Detecting Viable <i>Pseudogymnoascus destructans</i> (Ascomycota: Pseudeurotiaceae) from Walls of Bat Hibernacula: Effect of Culture Media <i>Karen Jane Vanderwolf, David Malloch, and Donald F. McAlpine</i>	158
<b>Article</b> A New Method to Estimate Annual and Event-Based Recharge Coefficient in Karst Aquifers; Case Study: Sheshpeer Karst Aquifer, South Central Iran <i>Alireza Kavousi and Ezzat Raeisi</i>	163
<b>Article</b> Inventory of Bats and Culturable Proteobacteria from Cueva Las Escaleras (Táchira, Venezuela): Evidence of Potential Human Health Risks <i>Michel Mérida, Gustavo Fermin, Paolo Ramoni-Perazzi, and Mariana Muñoz-Romo</i>	174
<b>Article</b> Drainage and Siphoning of a Karstic Spring: A Case Study <i>E. Sanz, P. Rosas, and I. Menéndez-Pidal</i>	183
<b>Article</b> Lack of Cave-Associated Mammals Influences the Fungal Assemblages of Insular Solution Caves in Eastern Canada <i>Karen J. Vanderwolf, David Malloch, Natalia V. Ivanova, and Donald F. McAlpine</i>	198
<b>Article</b> Terrestrial Filamentous Fungi from Gruta do Catão (São Desidério, Bahia, Northeastern Brazil) Show High Levels of Cellulose Degradation <i>Caio César Pires de Paula, Quimi Vidaurre Montoya, André Rodrigues, Maria Elina Bichuette, and Mirna Helena Regali Seleglim</i>	208
<b>Book Review</b> <i>The Archaeology of Caves in Ireland</i> by Marion Dowd <i>George M. Crothers</i>	218

### Journal of Cave and Karst Studies Distribution Changes

During the November 9, 2013, Board of Governors meeting, the BOG voted to change the *Journal* to electronic distribution for all levels of membership beginning with the April 2014 issue. Upon publication, electronic files (as PDFs) for each issue will be available for immediate viewing and download through the Member Portal at [www.caves.org/pub/journal](http://www.caves.org/pub/journal). For those individuals that wish to receive the *Journal* in a printed format, it is available by subscription for an additional fee. Online subscription and payment options are available on the *Journal* website.



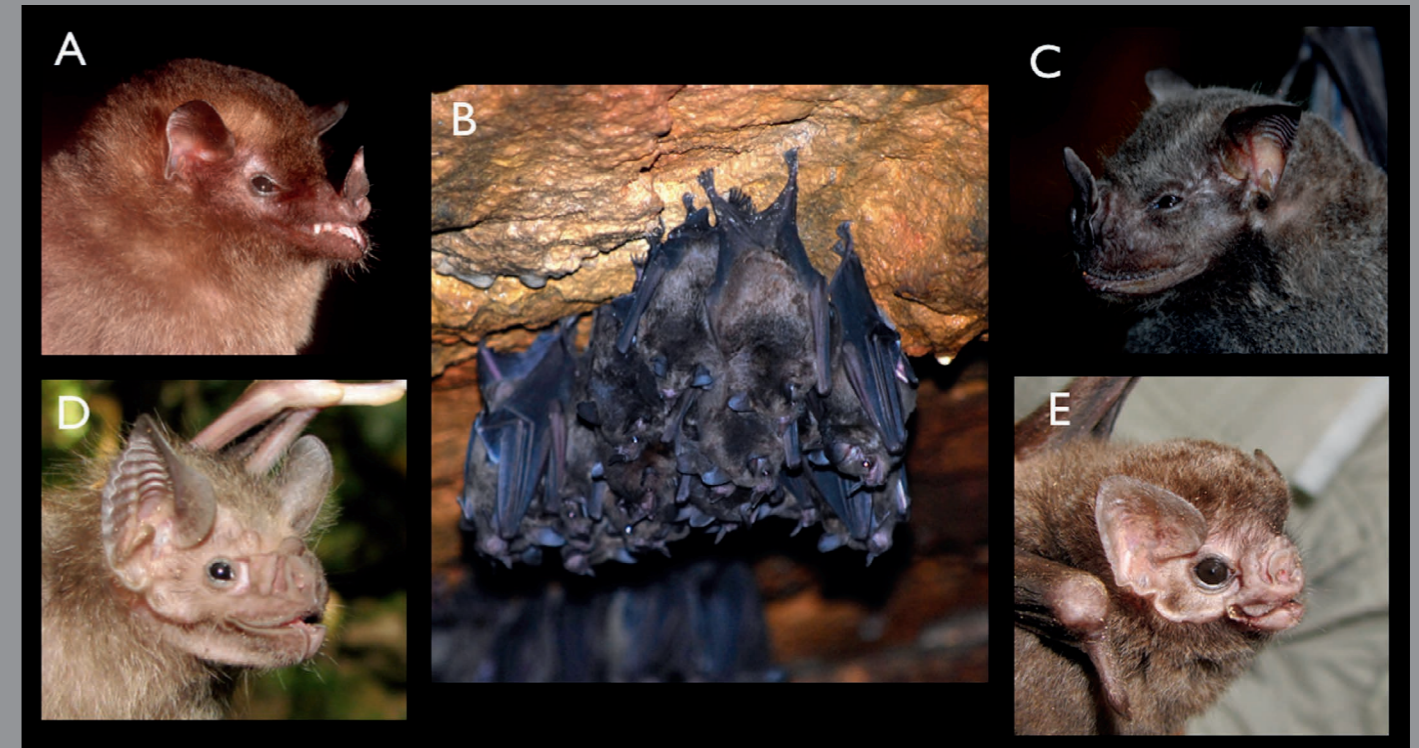
# JOURNAL OF CAVE AND KARST STUDIES

December 2016  
Volume 78, Number 3  
ISSN 1090-6924  
A Publication of the National  
Speleological Society



Journal of Cave and Karst Studies

Volume 78 Number 3 December 2016



DEDICATED TO THE ADVANCEMENT OF  
SCIENCE, EDUCATION, AND EXPLORATION

## GUIDE TO AUTHORS

**Published By**  
**The National Speleological Society**

**Editor-in-Chief**  
**Malcolm S. Field**

National Center of Environmental  
Assessment (8623P)  
Office of Research and Development  
U.S. Environmental Protection Agency  
1200 Pennsylvania Avenue NW  
Washington, DC 20460-0001  
703-347-8601 Voice 703-347-8692 Fax  
field.malcolm@epa.gov

**Production Editor**

**Scott A. Engel**  
CH2M HILL

2095 Lakeside Centre Way, Suite 200  
Knoxville, TN 37922  
865-560-2954  
scott.engel@ch2m.com

**Journal Copy Editor**

**Bill Mixon**

**JOURNAL ADVISORY BOARD**

**Penelope Boston**  
**Gareth Davies**  
**Luis Espinasa**  
**Derek Ford**  
**Louise Hose**  
**Leslie Melim**  
**Wil Orndorf**  
**Bill Shear**  
**Dorothy Vesper**

**BOARD OF EDITORS**

**Anthropology**  
**George Crothers**

University of Kentucky  
211 Lafferty Hall  
george.crothers@uky.edu

**Conservation-Life Sciences**

**Julian J. Lewis & Salisa L. Lewis**  
Lewis & Associates, LLC.  
lewisbioconsult@aol.com

**Earth Sciences**

**Benjamin Schwartz**  
Department of Biology  
Texas State University  
bs37@txstate.edu

**Robert Brinkmann**

Department of Geology, Environment, and Sustainability  
Hofstra University  
robert.brinkmann@hofstra.edu

**Mario Parise**

National Research Council, Italy  
m.parise@ba.irpi.cnr.it

**Exploration**

**Paul Burger**

Alaska Region Hydrologist  
National Park Service • Eagle River, AK  
paul\_burger@nps.gov

**Microbiology**

**Kathleen H. Lavoie**

Department of Biology  
State University of New York, Plattsburgh,  
lavoiekh@plattsburgh.edu

**Paleontology**

**Greg McDonald**

Park Museum Management Program  
National Park Service, Fort Collins, CO  
greg\_mcdonald@nps.gov

**Social Sciences**

**Joseph C. Douglas**

History Department  
Volunteer State Community College  
joe.douglas@volstate.edu

**Book Reviews**

**Arthur N. Palmer & Margaret V. Palmer**

Department of Earth Sciences  
State University of New York, Oneonta  
palmeran@oneonta.edu

The *Journal of Cave and Karst Studies* is a multidisciplinary journal devoted to cave and karst research. The *Journal* is seeking original, unpublished manuscripts concerning the scientific study of caves or other karst features. Authors do not need to be members of the National Speleological Society, but preference is given to manuscripts of importance to North American speleology.

**LANGUAGES:** The *Journal of Cave and Karst Studies* uses American-style English as its standard language and spelling style, with the exception of allowing a second abstract in another language when room allows. In the case of proper names, the *Journal* tries to accommodate other spellings and punctuation styles. In cases where the Editor-in-Chief finds it appropriate to use non-English words outside of proper names (generally where no equivalent English word exists), the *Journal* italicizes them. However, the common abbreviations i.e., e.g., et al., and etc. should appear in roman text. Authors are encouraged to write for our combined professional and amateur readerships.

**CONTENT:** Each paper will contain a title with the authors' names and addresses, an abstract, and the text of the paper, including a summary or conclusions section. Acknowledgments and references follow the text.

**ABSTRACTS:** An abstract stating the essential points and results must accompany all articles. An abstract is a summary, not a promise of what topics are covered in the paper.

**STYLE:** The *Journal* consults The Chicago Manual of Style on most general style issues.

**REFERENCES:** In the text, references to previously published work should be followed by the relevant author's name and date (and page number, when appropriate) in parentheses. All cited references are alphabetical at the end of the manuscript with senior author's last name first, followed by date of publication, title, publisher, volume, and page numbers. Geological Society of America format should be used (see <http://www.geosociety.org/pubs/geoguid5.htm>). Please do not abbreviate periodical titles. Web references are acceptable when deemed appropriate. The references should follow the style of: Author (or publisher), year, Webpage title: Publisher (if a specific author is available), full URL (e.g., <http://www.usgs.gov/citguide.html>) and date when the web site was accessed in brackets; for example [accessed July 16, 2002]. If there are specific authors given, use their name and list the responsible organization as publisher. Because of the ephemeral nature of websites, please provide the specific date. Citations within the text should read: (Author, Year).

**SUBMISSION:** Effective February 2011, all manuscripts are to be submitted via Peertrack, a web-based system for online submission. The web address is <http://www.edmgr.com/jcks>. Instructions are provided at that address. At your first visit, you will be prompted to establish a login and password, after which you will enter information about your manuscript (e.g., authors and addresses, manuscript title, abstract, etc.). You will then enter your manuscript, tables, and figure files separately or all together as part of the manuscript. Manuscript files can be uploaded as DOC, WPD, RTF, TXT, or LaTeX. A DOC template with additional manuscript specifications may be downloaded. (Note: LaTeX files should not

use any unusual style files; a LaTeX template and BiBTeX file for the *Journal* may be downloaded or obtained from the Editor-in-Chief.) Table files can be uploaded as DOC, WPD, RTF, TXT, or LaTeX files, and figure files can be uploaded as TIFF, EPS, AI, or CDR files. Alternatively, authors may submit manuscripts as PDF or HTML files, but if the manuscript is accepted for publication, the manuscript will need to be submitted as one of the accepted file types listed above. Manuscripts must be typed, double spaced, and single-sided. Manuscripts should be no longer than 6,000 words plus tables and figures, but exceptions are permitted on a case-by-case basis. Authors of accepted papers exceeding this limit may have to pay a current page charge for the extra pages unless decided otherwise by the Editor-in-Chief. Extensive supporting data will be placed on the *Journal's* website with a paper copy placed in the NSS archives and library. The data that are used within a paper must be made available. Authors may be required to provide supporting data in a fundamental format, such as ASCII for text data or comma-delimited ASCII for tabular data.

**DISCUSSIONS:** Critical discussions of papers previously published in the *Journal* are welcome. Authors will be given an opportunity to reply. Discussions and replies must be limited to a maximum of 1000 words and discussions will be subject to review before publication. Discussions must be within 6 months after the original article appears.

**MEASUREMENTS:** All measurements will be in Systeme Internationale (metric) except when quoting historical references. Other units will be allowed where necessary if placed in parentheses and following the SI units.

**FIGURES:** Figures and lettering must be neat and legible. Figure captions should be on a separate sheet of paper and not within the figure. Figures should be numbered in sequence and referred to in the text by inserting (Fig. x). Most figures will be reduced, hence the lettering should be large. Photographs must be sharp and high contrast. Color will generally only be printed at author's expense.

**TABLES:** See <http://www.caves.org/pub/journal/PDF/Tables.pdf> to get guidelines for table layout.

**COPYRIGHT AND AUTHOR'S RESPONSIBILITIES:** It is the author's responsibility to clear any copyright or acknowledgement matters concerning text, tables, or figures used. Authors should also ensure adequate attention to sensitive or legal issues such as land owner and land manager concerns or policies.

**PROCESS:** All submitted manuscripts are sent out to at least two experts in the field. Reviewed manuscripts are then returned to the author for consideration of the referees' remarks and revision, where appropriate. Revised manuscripts are returned to the appropriate Associate Editor who then recommends acceptance or rejection. The Editor-in-Chief makes final decisions regarding publication. Upon acceptance, the senior author will be sent one set of PDF proofs for review. Examine the current issue for more information about the format used.

**ELECTRONIC FILES:** The *Journal* is printed at high resolution. Illustrations must be a minimum of 300 dpi for acceptance.

The *Journal of Cave and Karst Studies* (ISSN 1090-6924, CPM Number #40065056) is a multi-disciplinary, refereed journal published three times a year by the National Speleological Society, 6001 Pulaski Pike NW, Huntsville, AL 35810-4431 USA; Phone (256) 852-1300; Fax (256) 851-9241, email: [nss@caves.org](mailto:nss@caves.org); World Wide Web: <http://www.caves.org/pub/journal/>. Check the *Journal* website for subscription rates. Back issues are available from the NSS office.

POSTMASTER: send address changes to the *Journal of Cave and Karst Studies*, 6001 Pulaski Pike NW, Huntsville, AL 35810-4431 USA.

The *Journal of Cave and Karst Studies* is covered by the following ISI Thomson Services Science Citation Index Expanded, ISI Alerting Services, and Current Contents/Physical, Chemical, and Earth Sciences.

Copyright © 2016 by the National Speleological Society, Inc.

Front cover: Bats from Cueva Las Escaleras, Venezuela. See Merida et al, in this issue.

